



EXPERIENCE ENDLESS



WHOLESOME ADVENTURES

with Genting Dream

A Resort Cruising At Sea

#WEAREHERE

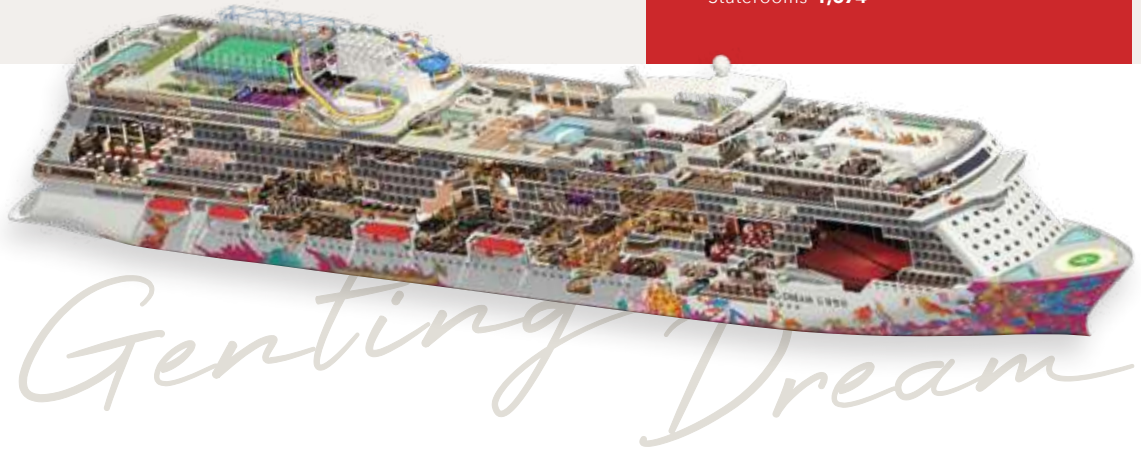
Fun-filled Activities & Amenities For All Ages

At 335m end to end, every inch of Genting Dream is crafted for shared experiences. When it comes to fun, we're pulling out all the stops.

FLEET OVERVIEW

Gross Tonnage **150,695 tons**
 Length **335m**
 Width **40m**
 Decks **18**
 Passenger Capacity **3,352 (Lower Berth)**
 Staterooms **1,674**

Take a
virtual 360° tour



Rope Course & Zipline

Feel the thrill of gliding above the ocean on a 35-metre zipline.



Waterslide Park

Get drenched in fun on one of our six different waterslides.



Zouk & Zouk Beach Club

There's a party going on somewhere! Dive in at one of our famous pool parties or dance till dawn with our guest DJs at Zouk.



The Palace

An all-inclusive enclave with private facilities and European-style butlers. It's a boutique hotel within a ship for luxury connoisseurs.



The Lido

Our buffet-style restaurant with a smorgasbord of international and halal cuisine including vegetarian and non-vegetarian Indian dishes.



Bar City

Sit back, savor world-renowned vintages, premium Scotch whiskies, cocktails, or bubbly while we entertain with performances and live bands.



Crystal Life Spa

Rejuvenate your mind, body and spirit in our spas. You can also enjoy a selection of healthy meals and beverages here.



Little Dreamers Club

Leave the kids with us while you explore the ship. They'll love our exciting line up of activities and classes. For kids aged 2 to 12.



The Boutiques

Splurge on International luxury brands at our boutiques or outlet store.



Zodiac Theatre

Enjoy live production shows from our acclaimed entertainment team.



PALACE VILLA

Approx. 224 sq.m
Max Occupancy 6
Deck 17
1 King-size Bed + 1
Queen-size Bed + 1
Double Sofa Bed

PALACE PENTHOUSE

Approx 56 - 115.4 sq.m
Max Occupancy 4 - 6*
Deck 13/16
1 King-size Bed + 1 Double Sofa /
1 Queen-size Bed + 2 Double Sofa Beds /
1 Queen-size Bed + 1 Double Sofa Bed Bed



PALACE DELUXE PREMIUM

From 41 - 61 sq.m
Max Occupancy 4
Deck 9 / 10 / 11 / 12 / 13 / 15
1 King-size Bed + 1 Double
Sofa Bed



PALACE DELUXE SUITE

From 41 sq.m
Max Occupancy 4
Deck 15
1 Queen-size Bed + 1 Double
Sofa Bed



PALACE SUITE

From 37 - 40 sq.m
Max Occupancy 4
Deck 13 / 15 / 16 / 17
1 Queen-size Bed + 1 Double
Sofa Bed



BALCONY/BALCONY DELUXE STATEROOM

From 20 sq.m /
From 22 - 28 sq.m
Max Occupancy 3 - 4 / 2 - 4
Deck 8 / 9 / 10 / 11 / 12 / 13 / 15
1 Queen-size Bed + 1 Single
Sofa Bed / 1 Single Sofa Bed
+ 1 Ceiling Pullman Bed / 1
Double Sofa Bed



OCEANVIEW STATEROOM

From 16 - 35 sq.m
Max Occupancy 2 - 4
Deck 5 / 9 / 10 / 11 / 12 / 13
2 Single Beds / 2 Single Beds
+ 1 Double Sofa Bed / 2 Single
Beds + 1 Single Sofa Bed



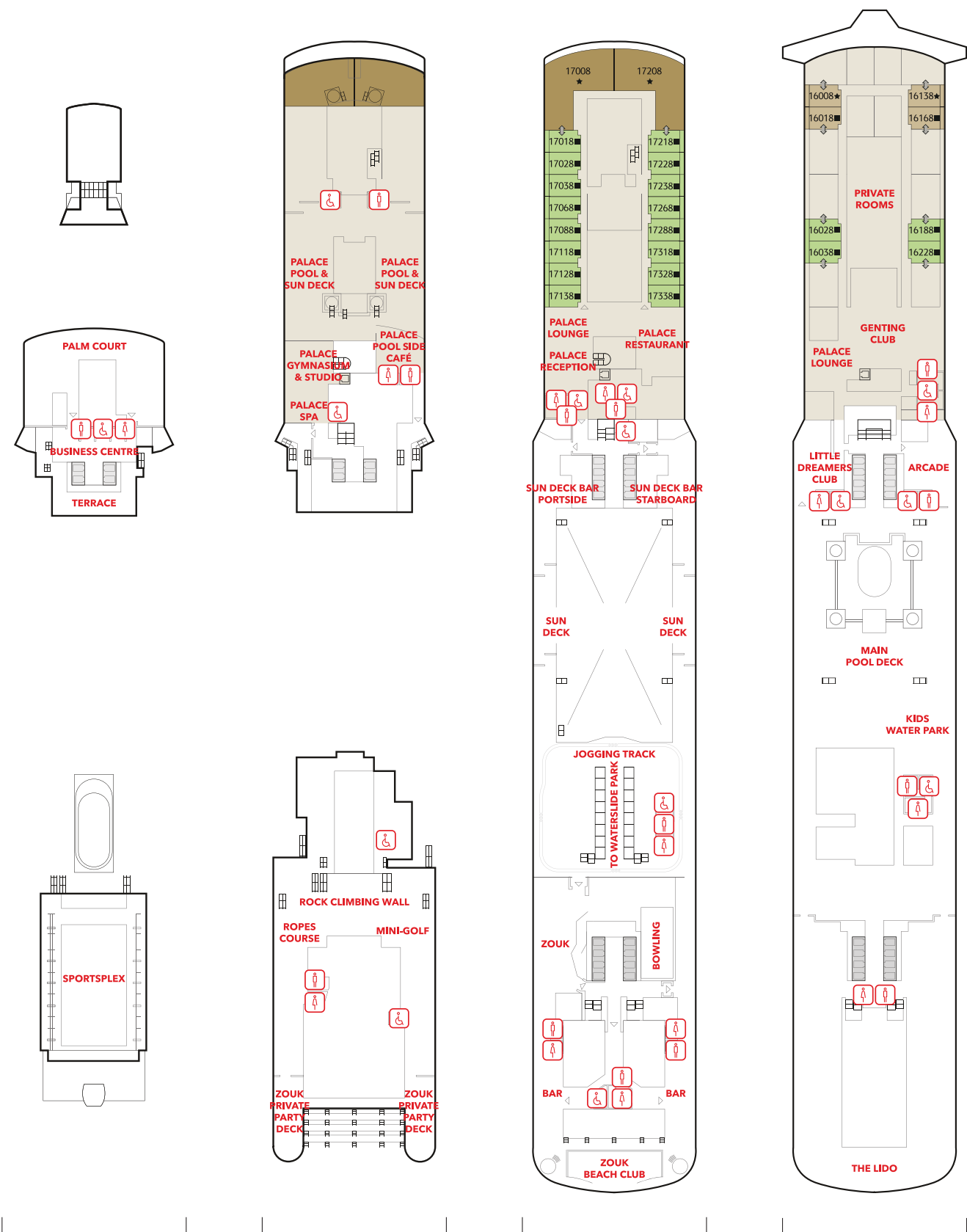
INTERIOR STATEROOM

From 13 - 14 sq.m
Max Occupancy 2 - 4^
Deck 5 / 8 / 9 / 10 / 11 /
12 / 13 / 15
2 Single Beds / 2 Single Beds
+ 1 Ceiling Pullman bed / 1
Single Bed + 1 Pullman Bed +
Double Sofa Bed

* The maximum occupancy of designated Palace Penthouses can be up to 6 guests upon request, subject to stateroom availability.

^ The above image is for a stateroom configuration for 2 persons - other stateroom configurations for 3 persons and 4 persons are also available.

Genting Dream Deck Plans



DECK 19

Lounge, Business Centre
& SportsPlex

DECK 18

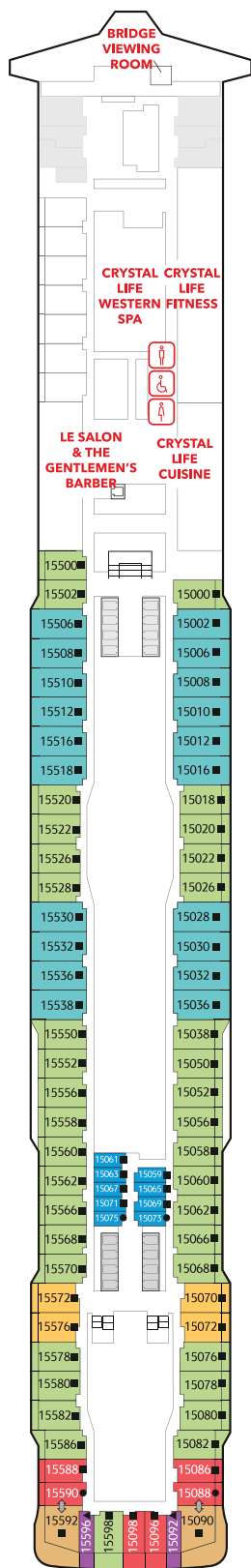
The Palace, Ropes Course,
Mini-Golf, Rock Climbing Wall
& Zouk Private Party Deck

DECK 17

The Palace, Suites, Zouk
& Zouk Beach Club

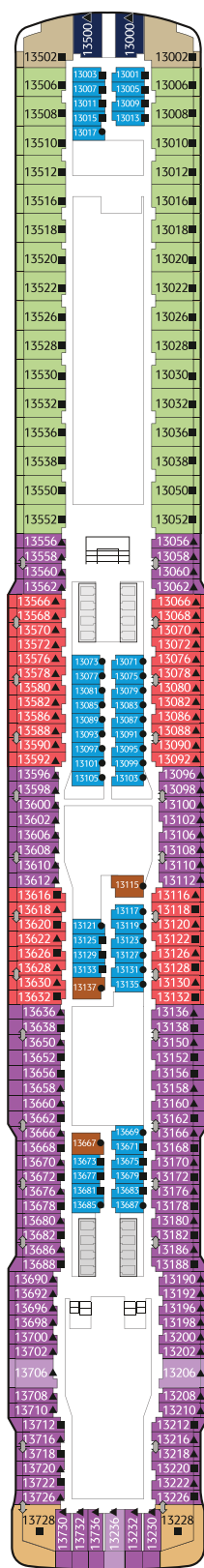
DECK 16

Genting Club, Suites,
Entertainment Venues,
Water Activities & Restaurant



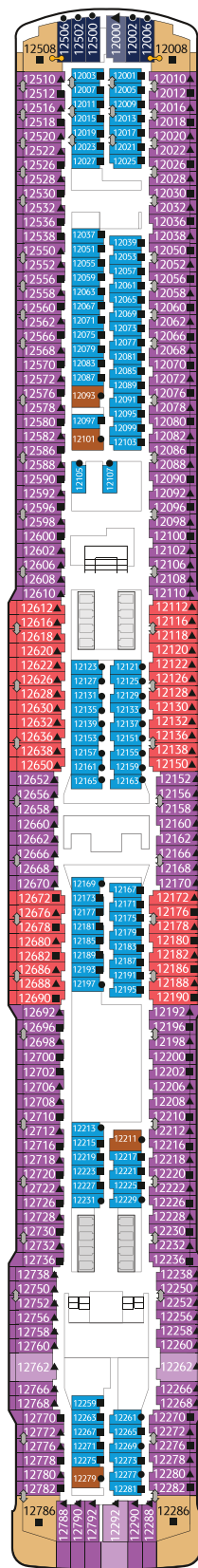
DECK 15

Western Spa, Fitness Centre,
Suites, Balcony Deluxe,
Balcony & Interior Staterooms



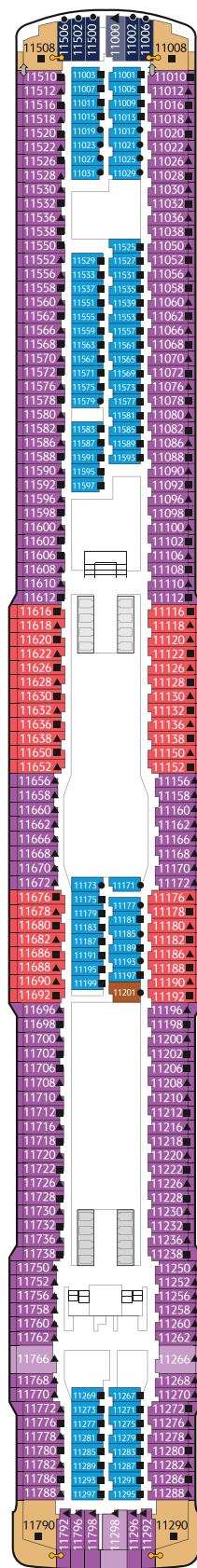
DECK 13

Suites, Balcony Deluxe,
Balcony, Oceanview &
Interior Staterooms



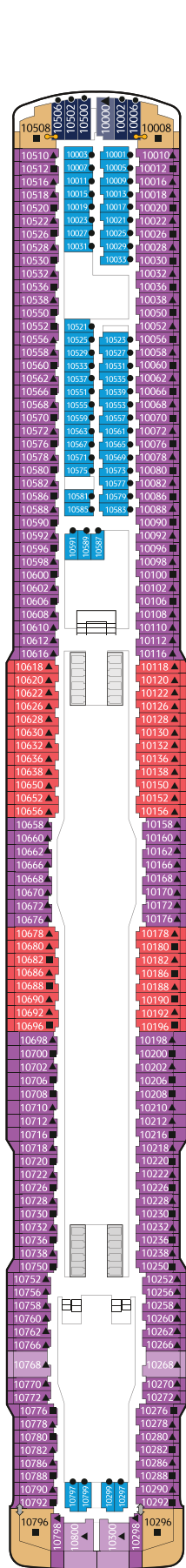
DECK 12

Suites, Balcony Deluxe,
Balcony, Oceanview &
Interior Staterooms



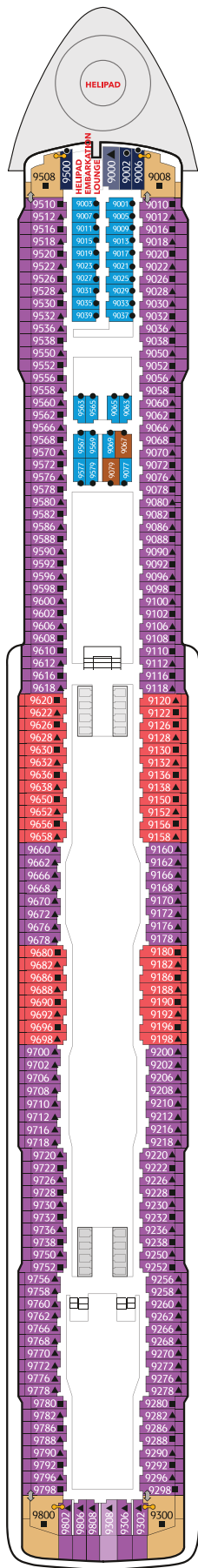
DECK 11

Suites, Balcony Deluxe,
Balcony, Oceanview &
Interior Staterooms



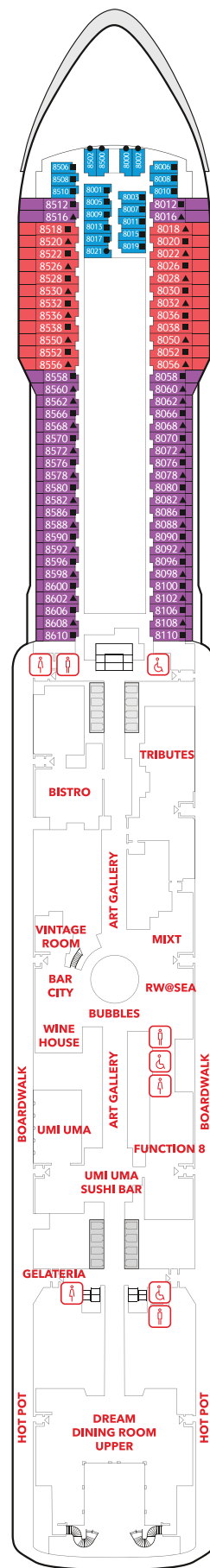
DECK 10

Suites, Balcony Deluxe, Balcony, Oceanview & Interior Staterooms



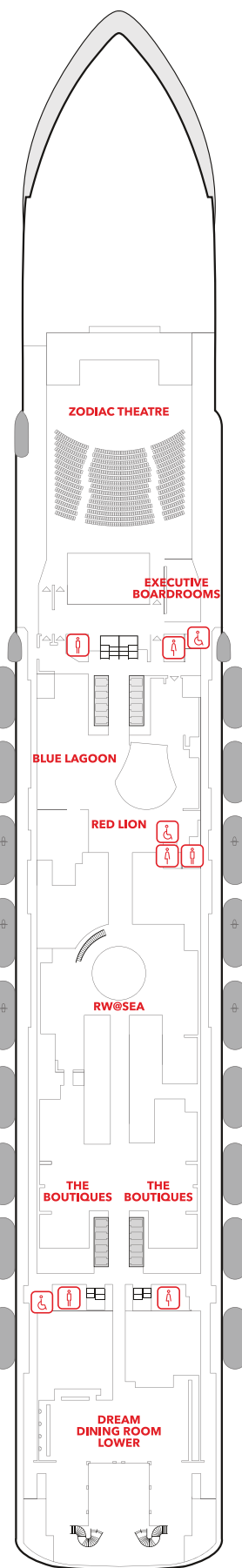
DECK 9

Suites, Balcony Deluxe, Balcony, Oceanview & Interior Staterooms, Helipad



DECK 8

Restaurants, Bars, Lounges & Multi-purpose Venue, Balcony Deluxe, Balcony & Interior Staterooms



DECK 7

Main Theatre, Executive Boardrooms, Restaurants, Retail Venues & Entertainment Venues

A Brand New Elevated Experience

The Palace is our all-suite concept within Genting Dream, your private club onboard - the largest luxury luxury ship-within-a-ship enclave found on any cruise liner. For connoisseurs of true Asian luxury, hospitality and exuberant living.

- 1 All-Suite Accommodations
- 2 All-Butler Service
- 3 All-Indulgent Benefits
- 4 All-Encompassing Spaces



On your arrival

- Access to VIP lounge at terminal
- Priority check-in with butler assistance
- Fast track security clearance
- Priority luggage check-in and check-out with express delivery

In your suite

- 24-hour butler concierge service
- Standard Wi-Fi package throughout cruise
- Dream beds and luxurious Italian linens from Frette™
- Premium bath amenities
- Nespresso™ machine with gourmet coffee and tea
- Welcome minibar beverages and snacks
- Welcome beverages, fruit plate and snacks

**Privileges are subject to change without prior notice.*

When you dine

- Exclusive access to The Palace Restaurant
- Set meal entitlements at designated specialty dining restaurants
- Happy Hour with complimentary drinks such as selected wines, beers and non-alcoholic beverages at selected venues
- Free-flow of chilled juices, Chinese and Japanese teas, and coffee throughout the day at selected venues
- Priority booking for Chef's Table and Vintage Room

When you explore

- Priority access to live production shows
- Selected exclusive Kids Programme for children between 2 and 12 years of age

We are here